

Jefferson County Profile 2013

A collection of recent demographic, social, economic and agricultural data

Compiled by Jan Vink

Assisted by Joe Francis, Sutee Anantsuksomsri, Nij Tontisirin, Johannes Plambeck



Cornell University
Cooperative Extension



This profile is a part of a set of profiles generated for each county in New York State. The profiles were developed and generated by the Cornell Program on Applied Demographics. The work is sponsored by Cornell Cooperative Extension and promoted with webinars and workshops in coordination with the Community & Regional Development Institute.

Cornell Program on Applied Demographics:

The Program on Applied Demographics (PAD) brings skills in demographics, economics, statistics, data gathering and data analysis together to provide a variety of organizations with data, information and advice.

For more information: <http://pad.human.cornell.edu/>

Cornell Cooperative Extension:

Cornell Cooperative Extension (CCE) puts knowledge to work in pursuit of economic vitality, ecological sustainability and social well-being. We bring local experience and research based solutions together, helping New York State families and communities thrive in our rapidly changing world.

For more information: <http://cce.cornell.edu/>

Community & Regional Development Institute:

The Community & Regional Development Institute (CaRDI) supports informed decision making for residents and communities in New York State through applied research and education.

For more information: <http://cardi.cornell.edu/>

All profiles are freely downloadable as PDF documents on the PAD website:

<http://pad.human.cornell.edu/profiles/index.cfm>

Contents

Contents	2
1 Reference Maps	4
2 Population density and Urban Areas Map	6
3 Total Population	7
3.1 Historic and projected	7
3.2 Change since previous Census	7
3.3 Annual population estimates	8
3.4 Percentage sub county change 2000-2010	9
4 Population by age	11
4.1 Historic and projected population pyramids	11
4.2 Selected age groups	12
4.3 Median age: comparison between areas	14
5 Race	15
5.1 Total and household population by race	15
5.2 Race composition by age	15
6 Housing units	16
6.1 Characteristics	16
6.2 Historical data on number of housing units and occupancy status	17
7 Education	18
7.1 Enrollment by level of school	18
7.2 Enrollment by age	18
7.3 Percentage age 18-24 enrolled in college	18
7.4 Educational attainment	19
8 Language spoken at home	19
9 Labor Force Characteristics	20
9.1 Labor force, employment and unemployment	20
9.2 Annual unemployment rate	21
9.3 Monthly unemployment rate	21
9.4 Employment and number of jobs	22
9.5 Class of worker	22
9.6 Jobs by industry sector	23
10 Household Income	24
10.1 Distribution	24
10.2 Median household income: Trends over time	25
10.3 Median household income: Comparison between areas	26
11 Poverty	27
11.1 Poverty characteristics	27
11.2 Poverty: Trends over time: Count	28
11.3 Poverty: Trends over time: Rate	28
11.4 Poverty rate: comparison between areas	29
12 Agriculture	30
12.1 Number of farms and land in farms	30
12.2 Farm Operator Characteristics	30

12.3 Map of type of crop 31

12.4 Estimated acreage by crop 32

13 Climate 33

14 Glossary..... 34

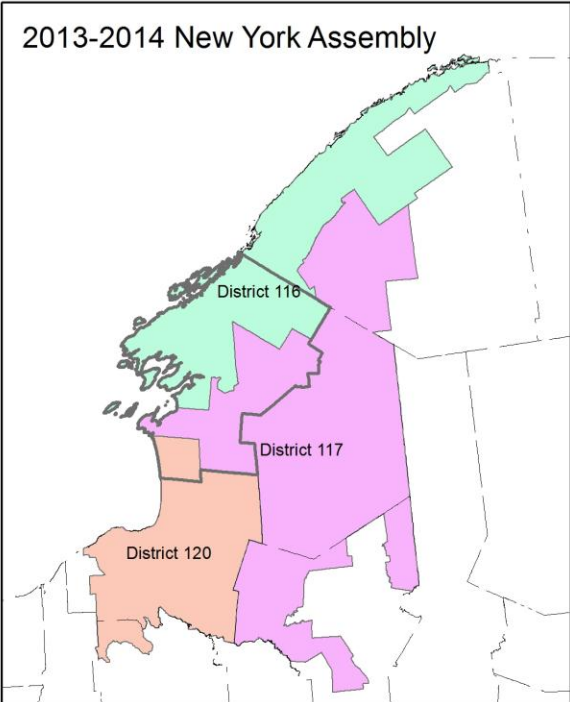
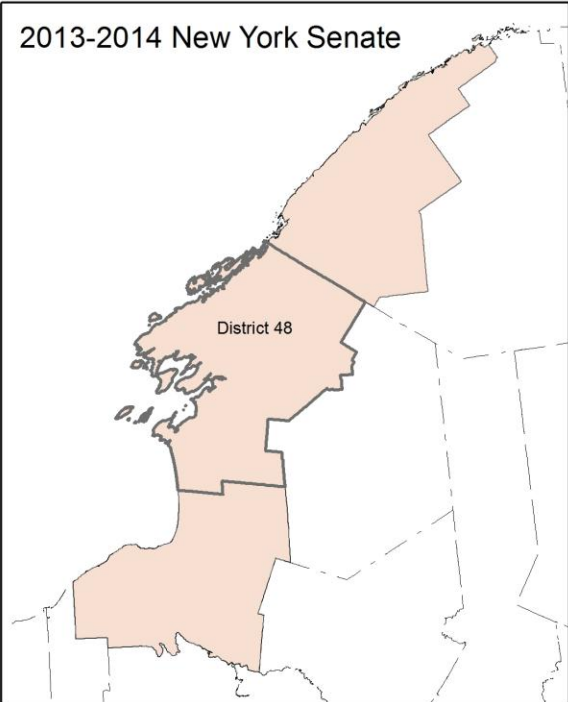
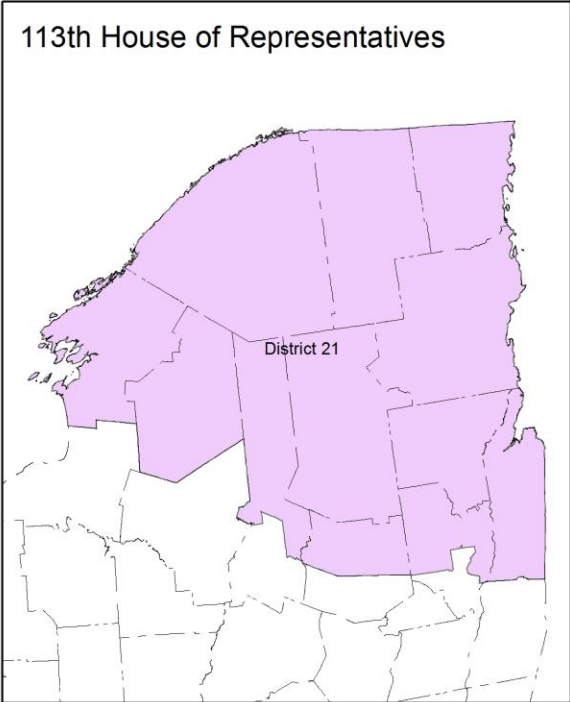
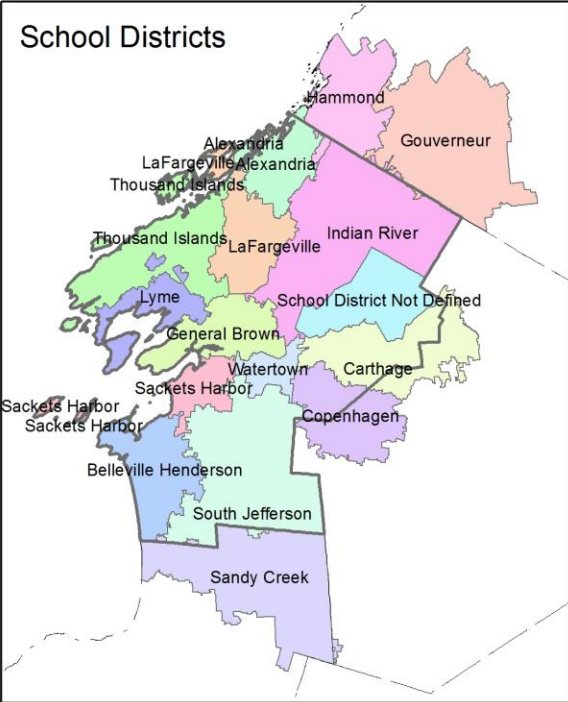
15 References 37

1 Reference Maps

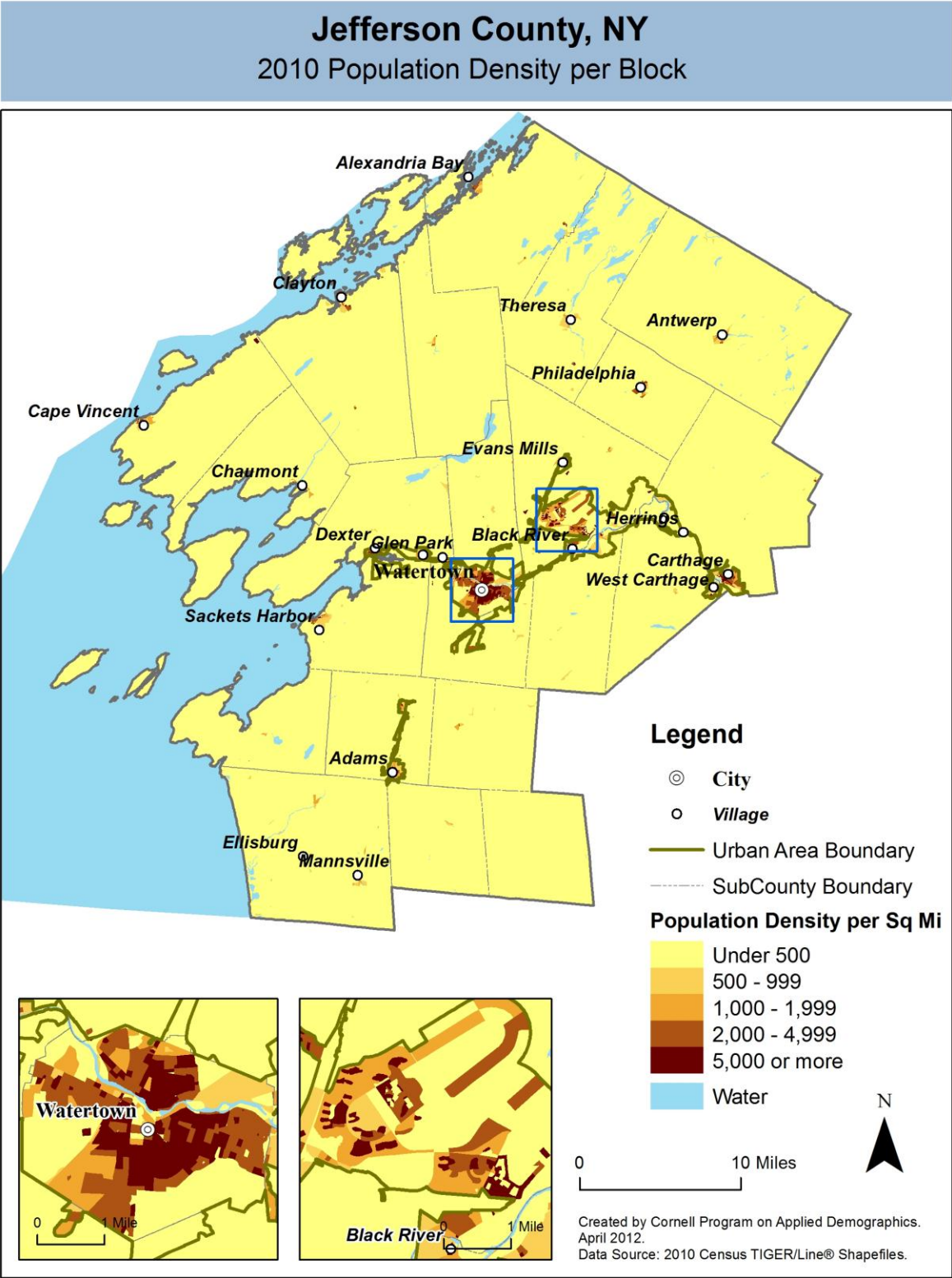


Jefferson County, NY

Overlap with School and Political Districts



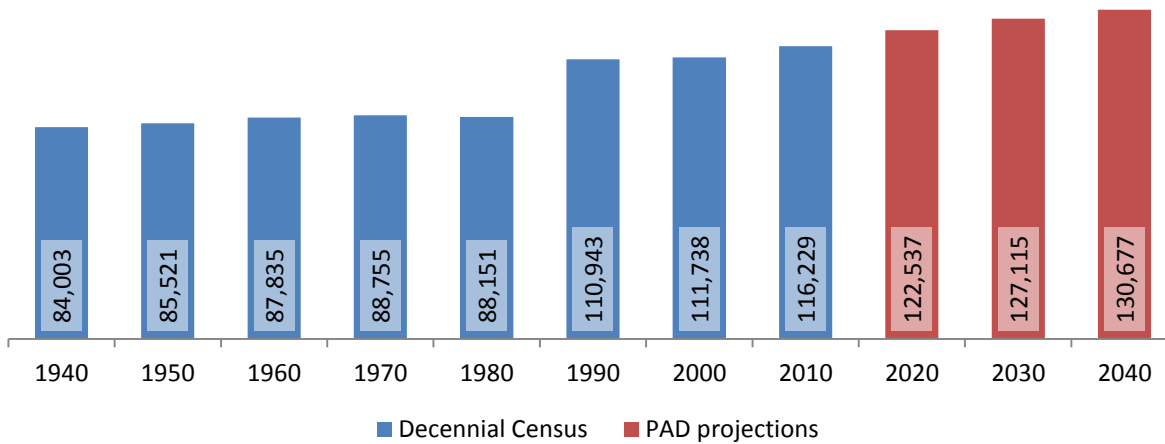
2 Population density and Urban Areas Map



3 Total Population

3.1 Historic and projected

Total population, Jefferson County, 1940-2040



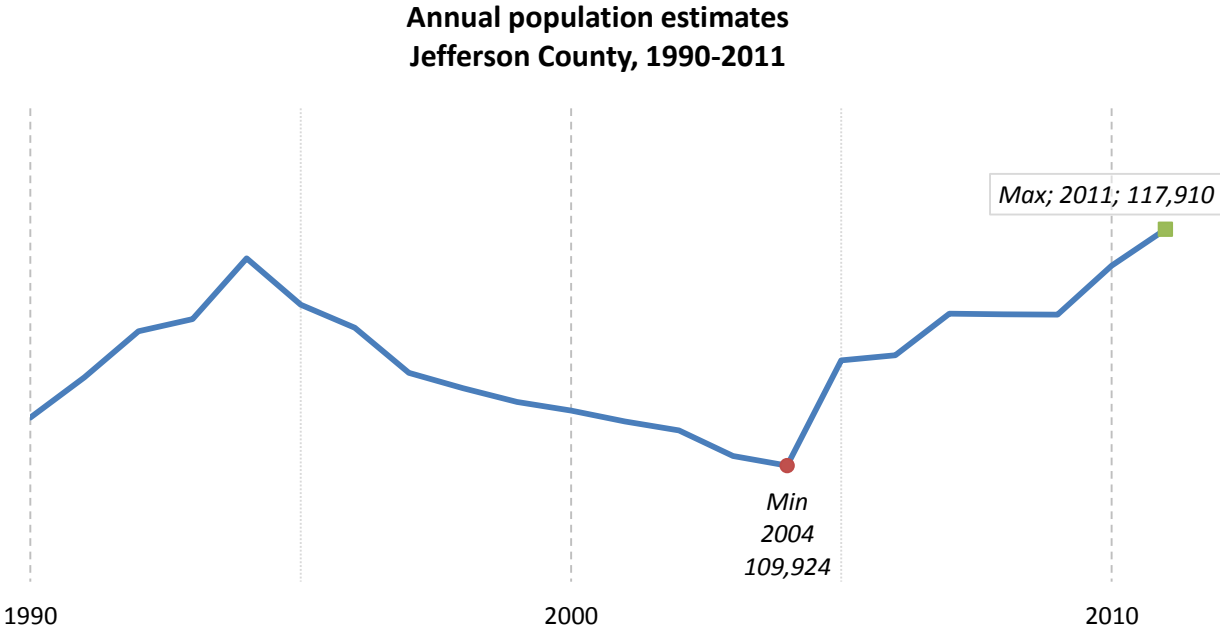
Source: 1940-2010 Decennial Census and projections by Cornell Program on Applied Demographics

3.2 Change since previous Census

	Total population	Change	
		Number	Percent
Decennial Census	1940	84,003	
	1950	85,521	1,518 1.8%
	1960	87,835	2,314 2.7%
	1970	88,755	920 1.0%
	1980	88,151	-604 -0.7%
	1990	110,943	22,792 25.9%
	2000	111,738	795 0.7%
	2010	116,229	4,491 4.0%
PAD projections	2020	122,537	6,308 5.4%
	2030	127,115	4,578 3.7%
	2040	130,677	3,562 2.8%

Source: 1940-2010 Decennial Census and projections by Cornell Program on Applied Demographics

3.3 Annual population estimates



Source: U.S. Census Bureau population estimates (1990-1999 and 2000-2009 intercensal and vintage 2011 postcensal)

3.4 Percentage sub county change 2000-2010

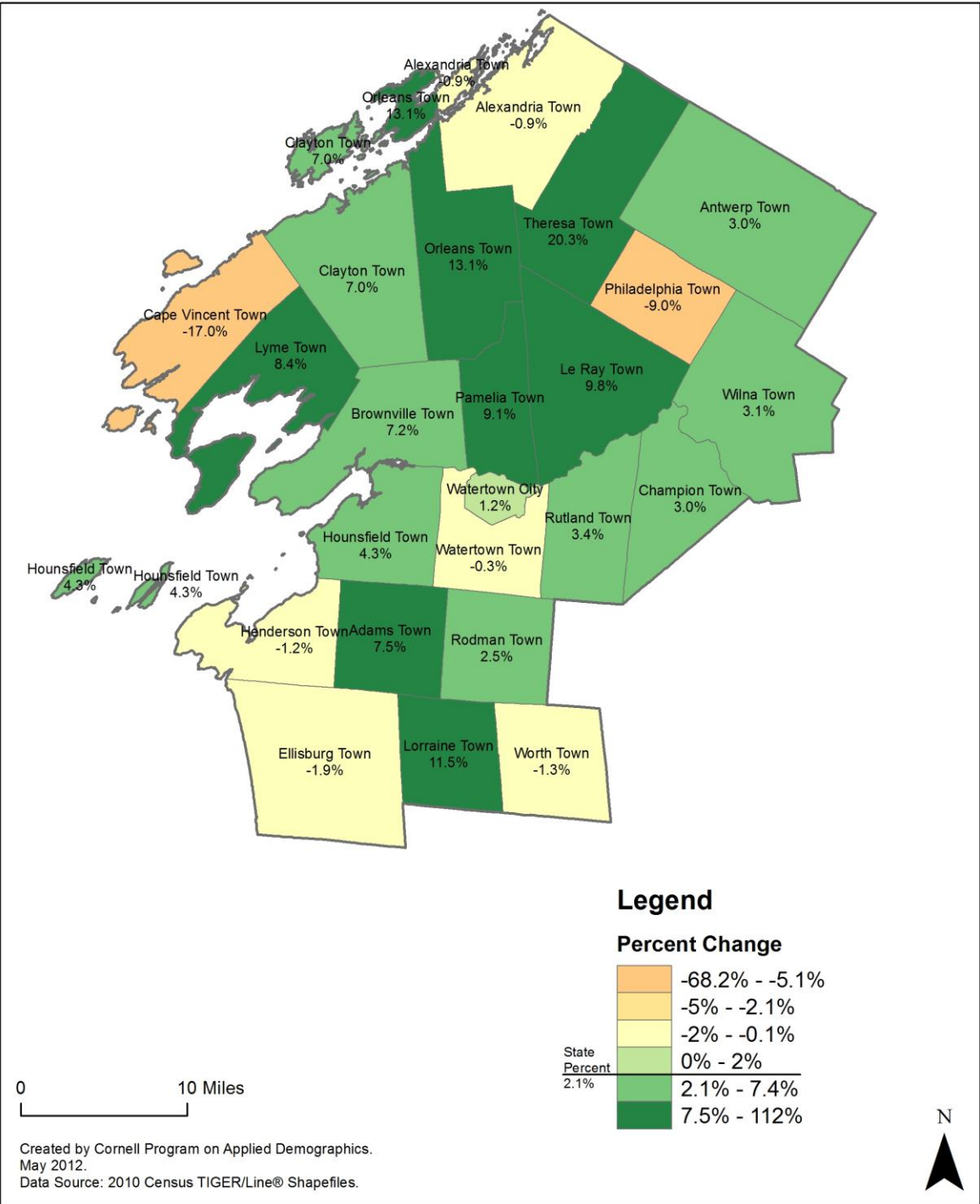
	Total Population		Difference	
	2000	2010	Count	%
New York State	18,976,821 *	19,378,102	401,281	2.1%
Jefferson County	111,738	116,229	4,491	4.0%
Cities				
Watertown	26,705	27,023	318	1.2%
Towns				
Adams	4,782	5,143	361	7.5%
Alexandria	4,097	4,061	-36	-0.9%
Antwerp	1,793	1,846	53	3.0%
Brownville	5,843	6,263	420	7.2%
Cape Vincent	3,345	2,777	-568	-17.0%
Champion	4,361	4,494	133	3.0%
Clayton	4,817	5,153	336	7.0%
Ellisburg	3,541	3,474	-67	-1.9%
Henderson	1,377	1,360	-17	-1.2%
Hounsfield	3,323	3,466	143	4.3%
Le Ray	19,836	21,782	1,946	9.8%
Lorraine	930	1,037	107	11.5%
Lyme	2,015	2,185	170	8.4%
Orleans	2,465	2,789	324	13.1%
Pamelia	2,897	3,160	263	9.1%
Philadelphia	2,140	1,947	-193	-9.0%
Rodman	1,147	1,176	29	2.5%
Rutland	2,959	3,060	101	3.4%
Theresa	2,414	2,905	491	20.3%
Wate	4,482	4,470	-12	-0.3%
Wilna	6,235	6,427	192	3.1%
Worth	234	231	-3	-1.3%

* Original counts revised through Count Question Resolution Program (CQR)

Source: U.S. Census Bureau intercensal population estimates 2000-2010

Jefferson County, NY

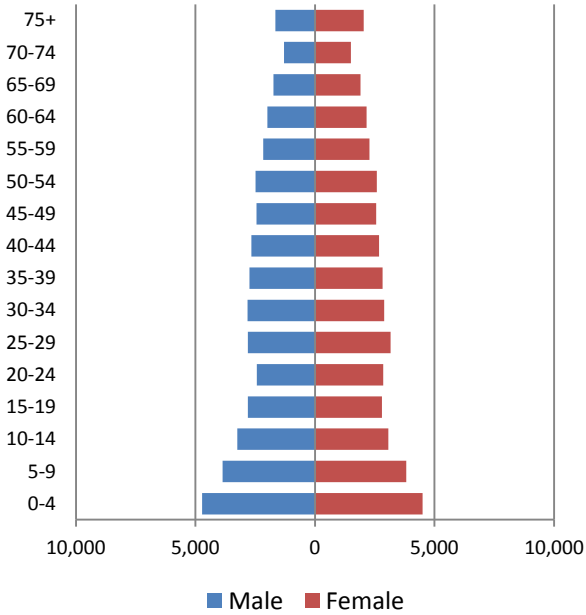
County Subdivision, Percent Change in Population 2000-2010



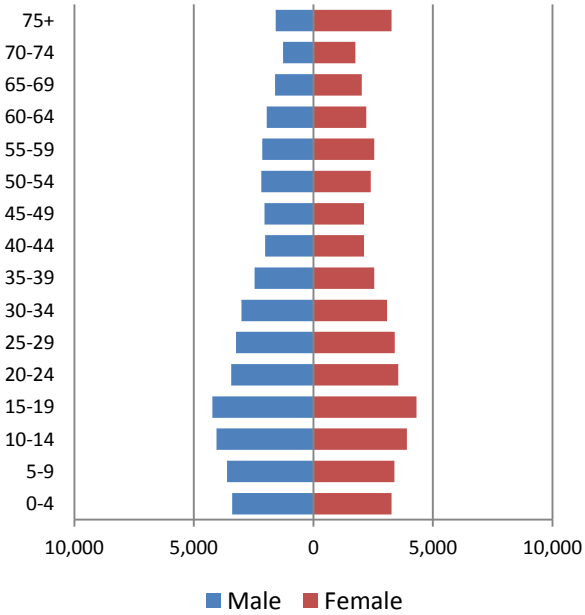
4 Population by age

4.1 Historic and projected population pyramids

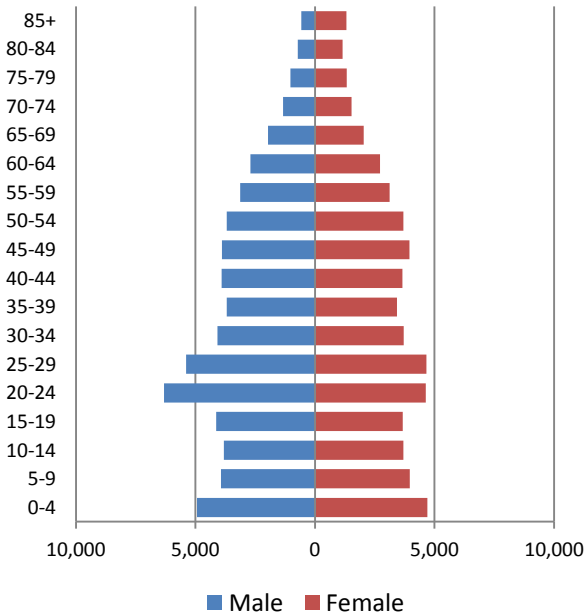
1950 Population Pyramid, Jefferson County



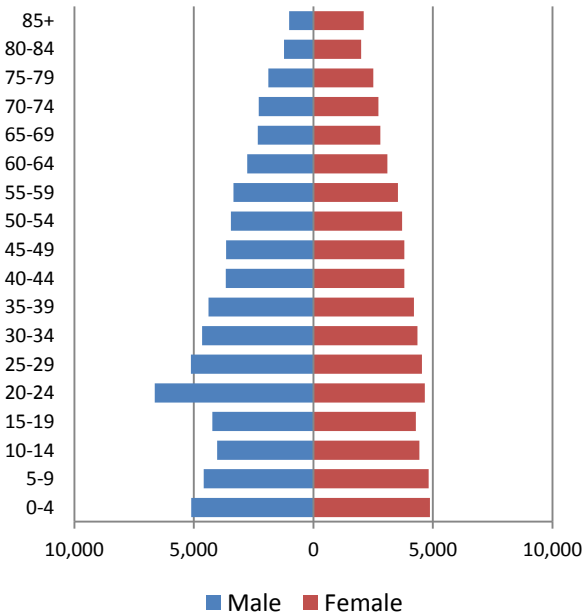
1980 Population Pyramid, Jefferson County



2010 Population Pyramid, Jefferson County



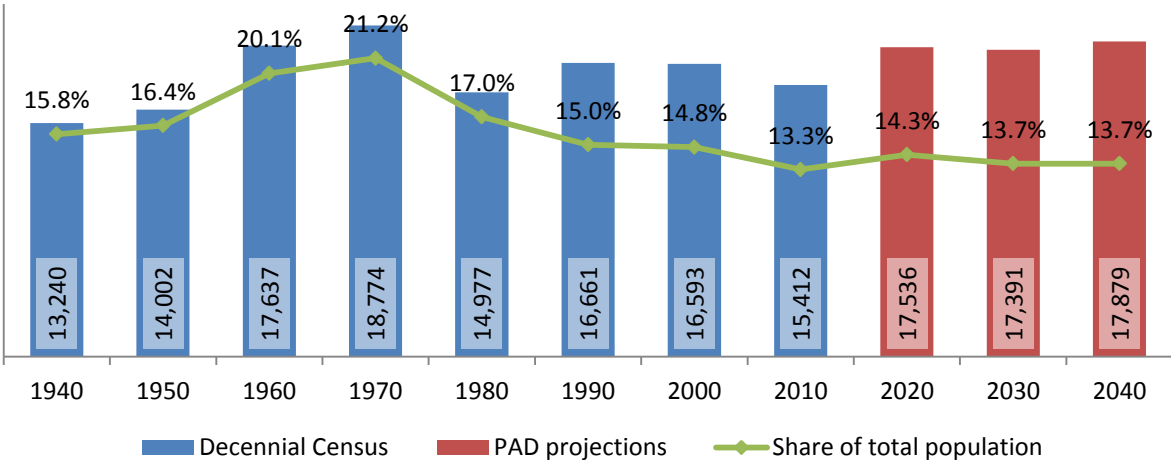
2040 Population Pyramid, Jefferson County



Source: 1950, 1980, 2010 Decennial Census and projections by Cornell Program on Applied Demographics

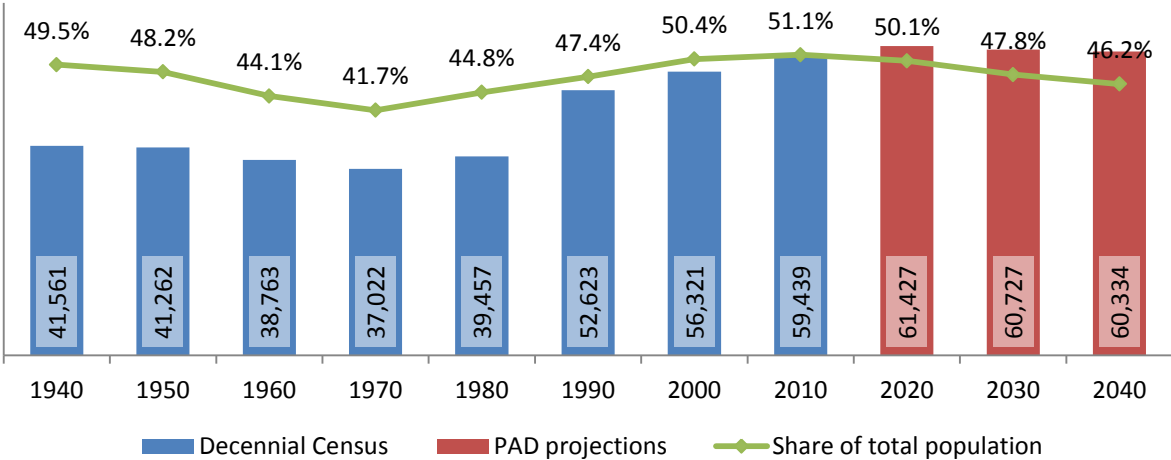
4.2 Selected age groups

Population age 5-14, Jefferson County, 1940-2040



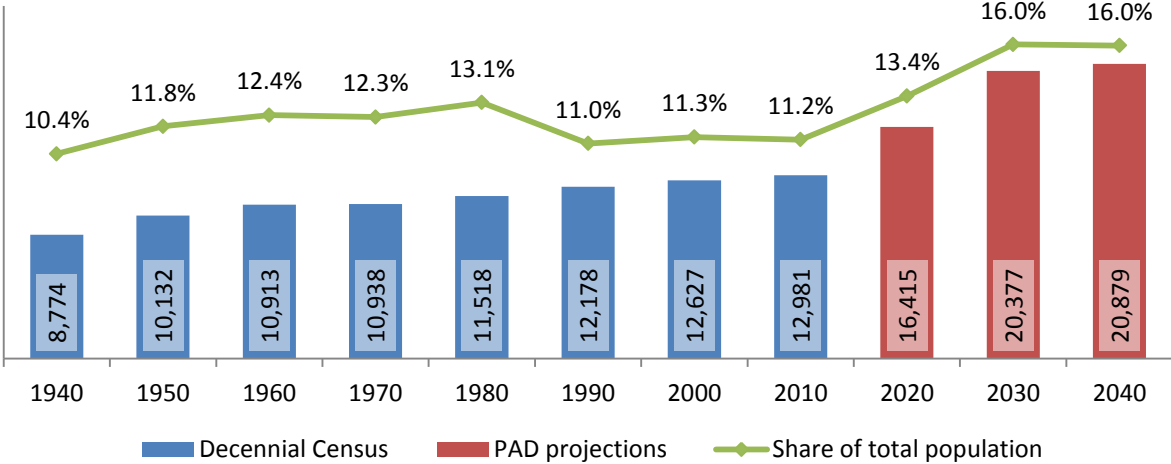
Source: 1940-2010 Decennial Census and projections by Cornell Program on Applied Demographics

Population age 25-64, Jefferson County, 1940-2040



Source: 1940-2010 Decennial Census and projections by Cornell Program on Applied Demographics

Population age 65 and over, Jefferson County, 1940-2040



Source: 1940-2010 Decennial Census and projections by Cornell Program on Applied Demographics

4.3 Median age: comparison between areas

	Median Age
New York State	38.0
Jefferson County	32.6

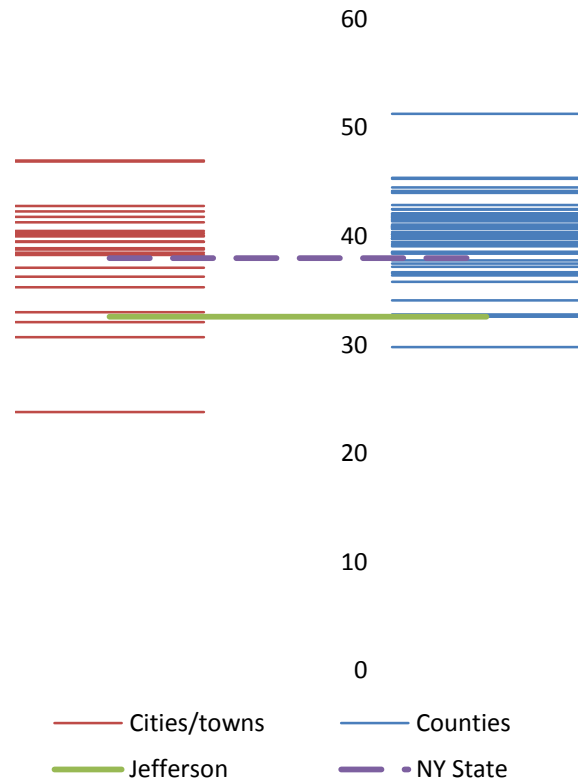
Cities

Watertown city	32.1
----------------	------

Towns

Adams town	38.5
Alexandria town	42.8
Antwerp town	36.3
Brownville town	40.1
Cape Vincent town	41.8
Champion town	35.3
Clayton town	40.5
Ellisburg town	38.8
Henderson town	47.0
Hounsfield town	40.3
Le Ray town	23.8
Lorraine town	40.0
Lyme town	46.9
Orleans town	38.3
Pamelia town	39.5
Philadelphia town	30.7
Rodman town	39.5
Rutland town	38.9
Theresa town	37.1
Watertown town	41.3
Wilna town	33.0
Worth town	42.3

Median age comparison within county (left) and between counties (right)



Source: 2010 Decennial Census

5 Race

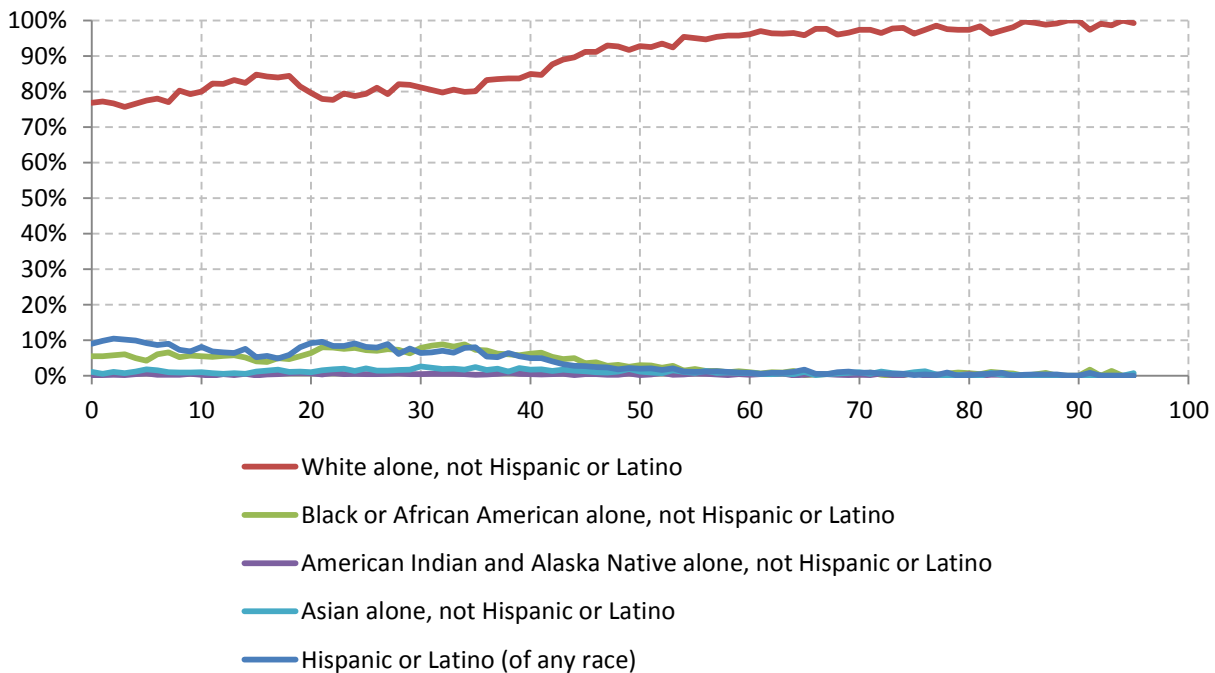
5.1 Total and household population by race

	Total		In households		In Group Quarters
	Count	Percentage	Count	Percentage	Count
Total population	116,229	100%	110,059	100%	6,170
Not Hispanic or Latino					
One race					
White	99,682	85.8%	95,941	87.2%	3,741
Black or African American	5,475	4.7%	4,208	3.8%	1,267
American Indian and Alaska Native	500	0.4%	458	0.4%	42
Asian	1,464	1.3%	1,339	1.2%	125
Native Hawaiian and Other Pacific Islander	273	0.2%	237	0.2%	36
Some other race	121	0.1%	94	0.1%	27
Two or more races	2,571	2.2%	2,494	2.3%	77
Hispanic or Latino (of any race)	6,143	5.3%	5,288	4.8%	855

Source: 2010 Decennial Census

5.2 Race composition by age

Race composition by age, Jefferson County



Source: 2010 Decennial Census

6 Housing units

6.1 Characteristics

HOUSING OCCUPANCY	COUNT		PERCENTAGE	
	Estimate	Margin of error	Estimate	Margin of error
Total housing units	57,581	± 238	100.0%	
Occupied housing units	44,722	± 655	77.7%	± 1.1
Vacant housing units	12,859	± 608	22.3%	± 1.1
YEAR STRUCTURE BUILT				
Total housing units	57,581	± 238	100.0%	
Built 2005 or later	2,659	± 359	4.6%	± 0.6
Built 2000 to 2004	2,011	± 282	3.5%	± 0.5
Built 1990 to 1999	6,653	± 454	11.6%	± 0.8
Built 1980 to 1989	8,439	± 534	14.7%	± 0.9
Built 1970 to 1979	5,268	± 445	9.1%	± 0.8
Built 1960 to 1969	3,355	± 377	5.8%	± 0.7
Built 1950 to 1959	4,447	± 431	7.7%	± 0.7
Built 1940 to 1949	2,736	± 320	4.8%	± 0.6
Built 1939 or earlier	22,013	± 700	38.2%	± 1.2
HOUSING TENURE				
Occupied housing units	44,722	± 655	100.0%	
Owner-occupied	25,869	± 568	57.8%	± 1.1
Renter-occupied	18,853	± 629	42.2%	± 1.1
HOUSE HEATING FUEL				
Occupied housing units	44,722	± 655	100.0%	
Utility gas	18,678	± 644	41.8%	± 1.3
Bottled, tank, or LP gas	5,009	± 409	11.2%	± 0.9
Electricity	6,896	± 453	15.4%	± 1.0
Fuel oil, kerosene, etc.	10,220	± 582	22.9%	± 1.3
Coal or coke	101	± 68	0.2%	± 0.2
Wood	3,294	± 296	7.4%	± 0.7
Solar energy	3	± 5	0.0%	± 0.1
Other fuel	415	± 117	0.9%	± 0.3
No fuel used	106	± 56	0.2%	± 0.1
VALUE				
Owner-occupied units	25,869	± 568	100.0%	
Less than \$50,000	2,623	± 276	10.1%	± 1.1
\$50,000 to \$99,999	6,884	± 443	26.6%	± 1.5
\$100,000 to \$149,999	6,014	± 394	23.2%	± 1.4
\$150,000 to \$199,999	4,138	± 341	16.0%	± 1.3
\$200,000 to \$299,999	3,572	± 354	13.8%	± 1.4
\$300,000 to \$499,999	1,764	± 222	6.8%	± 0.8
\$500,000 to \$999,999	740	± 137	2.9%	± 0.5
\$1,000,000 or more	134	± 64	0.5%	± 0.2
Median (dollars)	124,000	± 3,332		

Source: 2007-2011 American Community Survey

6.2 Historical data on number of housing units and occupancy status

Year	Number of Housing Units	Change since previous Census	Occupied	Occupancy rate	Vacant
1970	34,698		27,435	79.1%	7,263
1980	42,012	21.1%	30,792	73.3%	11,220
1990	50,519	20.2%	37,851	74.9%	12,668
2000	54,070	7.0%	40,068	74.1%	14,002
2010	57,966	7.2%	43,451	75.0%	14,515

Source: 1970-2010 Decennial Census

7 Education

7.1 Enrollment by level of school

	Estimate	Margin of error
Total enrolled in school	27,874	± 543
Nursery school, preschool	1,604	± 227
Kindergarten	1,897	± 247
Elementary: grade 1 to grade 4	6,307	± 330
Elementary: grade 5 to grade 8	5,853	± 387
High school: grade 9 to grade 12	6,275	± 257
College, undergraduate	4,979	± 421
Graduate, professional school	959	± 190

Source: 2007-2011 American Community Survey

7.2 Enrollment by age

	Estimate	Margin of error
3 and 4 years	40.7%	± 5.7
5 to 9 years	96.2%	± 1.4
10 to 14 years	99.0%	± 0.5
15 to 17 years	96.2%	± 1.7
18 and 19 years	58.5%	± 5.5
20 to 24 years	19.0%	± 2.8
25 to 34 years	8.8%	± 1.4
35 years and over	2.7%	± 0.4

Source: 2007-2011 American Community Survey

7.3 Percentage age 18-24 enrolled in college

	Estimate	Margin of error
Population 18 to 24 years	14,990	± 195
Enrolled in college or graduate school	21.4%	± 2.4
Males 18 to 24 years	9,027	± 168
Enrolled in college or graduate school	16.3%	± 2.9
Females 18 to 24 years	5,963	± 75
Enrolled in college or graduate school	29.2%	± 4.8

Source: 2007-2011 American Community Survey

7.4 Educational attainment

	COUNT		PERCENTAGE	
	Estimate	Margin of error	Estimate	Margin of error
Population 25 years and over	71,887	± 195	100%	
EDUCATIONAL ATTAINMENT				
Less than 9th grade	1,851	± 251	2.6%	± 0.3
9th to 12th grade, no diploma	6,696	± 611	9.3%	± 0.8
High school graduate (includes equivalency)	25,783	± 913	35.9%	± 1.3
Some college, no degree	14,387	± 678	20.0%	± 0.9
Associate's degree	8,349	± 576	11.6%	± 0.8
Bachelor's degree	8,732	± 549	12.1%	± 0.8
Graduate or professional degree	6,089	± 438	8.5%	± 0.6
Percent high school graduate or higher			88.1%	± 0.9
Percent bachelor's degree or higher			20.6%	± 1.0

Source: 2007-2011 American Community Survey

8 Language spoken at home

	COUNT		PERCENTAGE		SPEAK ENGLISH LESS THAN "VERY WELL"	
	Estimate	Margin of error	Estimate	Margin of error	Estimate	Margin of error
Population 5 years and over	106,788	± 28	100%			
LANGUAGE SPOKEN AT HOME						
English only	98,172	± 704	91.9%	± 0.7		
Language other than English	8,616	± 703	8.1%	± 0.7	2,264	± 406
Spanish	3,533	± 326	3.3%	± 0.3	699	± 185
Other Indo-European languages	3,743	± 644	3.5%	± 0.6	1,114	± 339
Asian and Pacific Islander languages	945	± 208	0.9%	± 0.2	365	± 199
Other languages	395	± 142	0.4%	± 0.1	86	± 61

Source: 2007-2011 American Community Survey

9 Labor Force Characteristics

9.1 Labor force, employment and unemployment

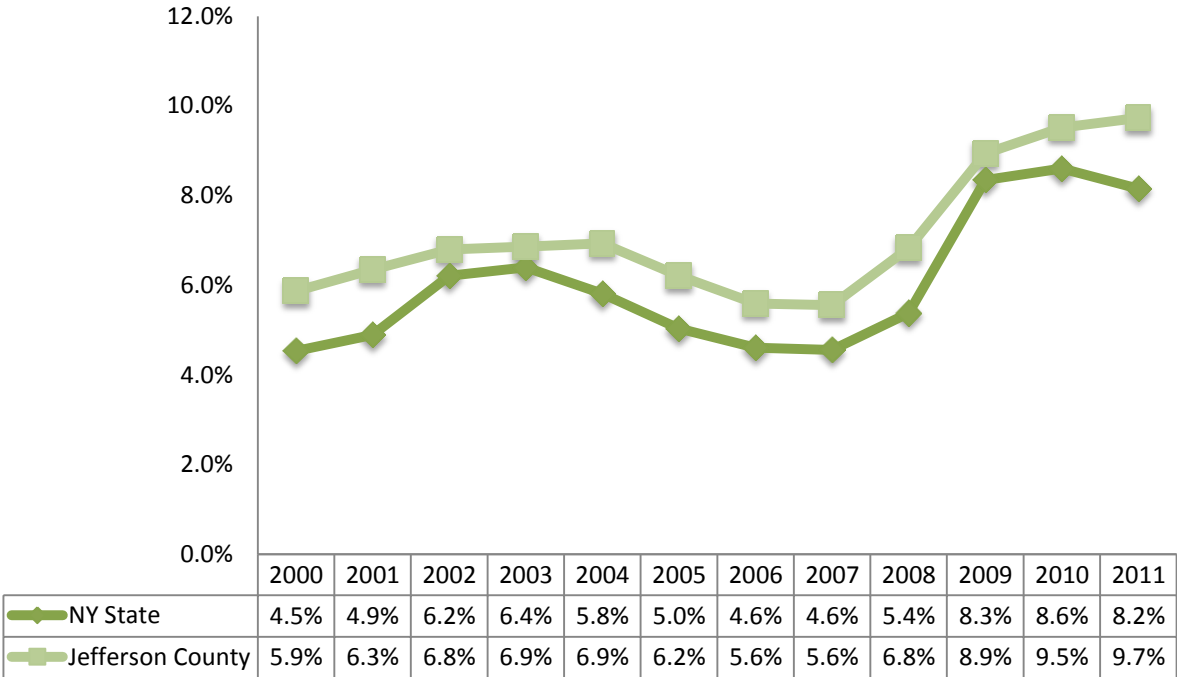
	TOTAL		IN LABOR FORCE		EMPLOYED		UNEMPLOYMENT RATE	
	Estimate	Margin of error	Estimate	Margin of error	Estimate	Margin of error	Estimate	Margin of error
Population 16 years and over	89,856	± 198	65.5%	± 0.9	50.1%	± 1.1	9.9%	± 0.9
AGE								
16 to 19 years	6,284	± 330	57.0%	± 4.3	36.3%	± 4.2	27.3%	± 5.9
20 to 24 years	11,685	± 229	78.4%	± 2.8	38.3%	± 3.9	16.1%	± 3.7
25 to 44 years	32,403	± 218	79.4%	± 1.4	60.1%	± 1.8	8.9%	± 1.2
45 to 54 years	14,994	± 95	80.6%	± 1.9	73.6%	± 2.2	6.9%	± 1.5
55 to 64 years	11,569	± 56	58.0%	± 2.9	55.2%	± 3.0	4.7%	± 1.1
65 to 74 years	6,767	± 47	18.9%	± 2.6	16.1%	± 2.2	15.1%	± 5.9
75 years and over	6,154	± 42	4.8%	± 1.3	4.4%	± 1.3	8.8%	± 6.0
RACE AND HISPANIC OR LATINO ORIGIN								
One race	87,799	± 368	65.4%	± 0.9	50.5%	± 1.1	9.4%	± 0.9
White	80,111	± 359	65.6%	± 1.0	51.9%	± 1.1	9.0%	± 0.9
Black or African American	4,140	± 255	59.0%	± 5.0	30.7%	± 5.2	18.9%	± 7.4
American Indian and Alaska Native	319	± 105	63.3%	± 16.4	48.9%	± 17.2	10.3%	± 11.8
Asian	1,183	± 103	60.2%	± 8.5	51.8%	± 9.4	2.9%	± 2.8
Pacific Islander	223	± 152	100.0%	± 13.5	0.0%	± 13.5	100.0%	± 89.4
Some other race	1,823	± 310	70.8%	± 7.9	36.2%	± 8.9	17.1%	± 8.6
Two or more races	2,057	± 329	70.2%	± 8.1	34.3%	± 7.5	35.1%	± 11.4
Hispanic or Latino origin (of any race)	4,184	± 37	70.3%	± 4.3	32.6%	± 5.3	16.5%	± 5.8
White alone, not Hispanic or Latino	78,372	± 217	65.4%	± 1.0	52.3%	± 1.1	9.0%	± 0.9
SEX								
Population 20 to 64 years	70,651	± 217	76.0%	± 1.0	58.6%	± 1.2	8.6%	± 0.8
Male	37,313	± 196	82.5%	± 1.2	56.2%	± 1.6	8.6%	± 1.3
Female	33,338	± 113	68.7%	± 1.5	61.2%	± 1.8	8.6%	± 1.1
With own children under 6 years	7,285	± 411	54.8%	± 3.5	46.5%	± 3.5	11.2%	± 3.6
EDUCATIONAL ATTAINMENT								
Population 25 to 64 years	58,966	± 202	75.5%	± 1.1	62.6%	± 1.2	7.6%	± 0.8
Less than high school graduate	5,827	± 633	49.7%	± 4.6	38.9%	± 4.2	19.9%	± 4.0
High school graduate (includes equivalency)	20,412	± 876	72.6%	± 2.0	59.8%	± 2.3	9.0%	± 1.7
Some college or associate's degree	20,158	± 887	80.3%	± 1.8	66.2%	± 2.1	6.8%	± 1.4
Bachelor's degree or higher	12,569	± 623	84.5%	± 1.8	72.3%	± 2.7	3.1%	± 1.0

Table formula: **LABOR FORCE** = # EMPLOYED + # UNEMPLOYED
 % IN LABOR FORCE = LABOR FORCE / TOTAL * 100%
 % EMPLOYED = # EMPLOYED / TOTAL * 100%
 UNEMPLOYMENT RATE = # UNEMPLOYED / LABOR FORCE * 100%

Source: 2007-2011 American Community Survey

9.2 Annual unemployment rate

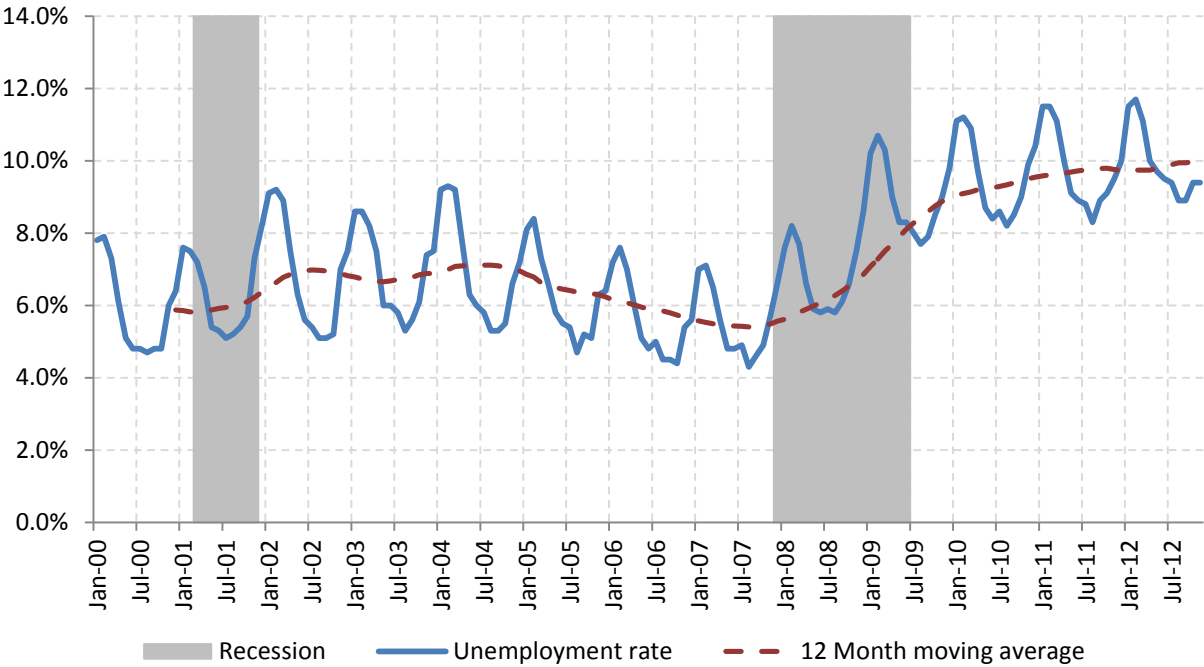
Annual unemployment rate, Jefferson County and New York State



Source: Bureau Labor Statistics (BLS)

9.3 Monthly unemployment rate

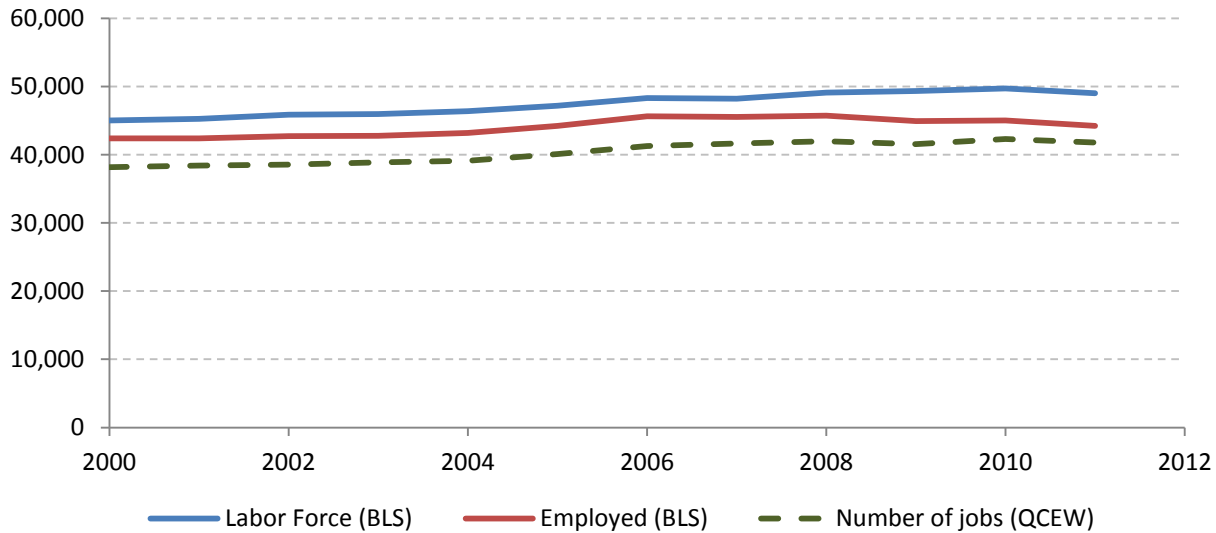
Monthly unemployment rate, Jefferson County



Source: Bureau Labor Statistics (BLS)

9.4 Employment and number of jobs

**Labor force, number of employed workers and number of jobs
Jefferson County**



Source: Bureau Labor Statistics (BLS) and NY Department of Labor - Quarterly Census of Employment and Wages (QCEW) – annual averages

9.5 Class of worker

		Median earnings (\$)					
		Total	%Male	%Female	Total	Male	Female
Civilian employed population 16 years and over	Estimate	45,009	50.9%	49.1%	30,105	36,507	23,617
	Margin of error	± 990	± 0.9	± 0.9	± 890	± 1,220	± 1,172
Private for-profit wage and salary workers:	Estimate	26,526	54.8%	45.2%	26,506	32,630	20,722
	Margin of error	± 925	± 1.4	± 1.4	± 1,031	± 1,263	± 1,377
Employee of private company workers	Estimate	25,556	54.0%	46.0%	26,054	32,134	20,575
	Margin of error	± 963	± 1.5	± 1.5	± 1,068	± 1,381	± 1,393
Self-employed in own incorporated business workers	Estimate	970	75.1%	24.9%	40,154	42,148	31,296
	Margin of error	± 197	± 7.1	± 7.1	± 5,032	± 12,196	± 4,405
Private not-for-profit wage and salary workers	Estimate	4,158	24.9%	75.1%	28,543	36,270	27,128
	Margin of error	± 361	± 3.6	± 3.6	± 1,874	± 3,702	± 3,153
Local government workers	Estimate	5,087	37.9%	62.1%	38,855	44,930	33,892
	Margin of error	± 412	± 3.7	± 3.7	± 3,516	± 3,536	± 3,124
State government workers	Estimate	2,655	58.5%	41.5%	50,164	57,390	33,628
	Margin of error	± 284	± 4.6	± 4.6	± 3,254	± 3,248	± 3,788
Federal government workers	Estimate	3,217	59.5%	40.5%	46,868	52,640	36,397
	Margin of error	± 377	± 5.4	± 5.4	± 2,509	± 4,349	± 3,229
Self-employed in own not incorporated business workers and unpaid family workers	Estimate	3,366	57.2%	42.8%	20,053	22,405	12,707
	Margin of error	± 366	± 5.4	± 5.4	± 5,231	± 5,416	± 2,595

Source: 2007-2011 American Community Survey

9.6 Jobs by industry sector

	Jefferson County			NY state
	2011	Change since 2006	% of total	% of total
All NAICS Sectors	36,694	-1.5%	100.0%	100.0%
Agriculture, Forestry, Fishing and Hunting	374	30.3%	1.0%	0.3%
Mining, Quarrying, and Oil and Gas Extraction	41	-38.8%	0.1%	0.1%
Utilities	182	-26.6%	0.5%	0.5%
Construction	1,816	-1.0%	4.9%	3.5%
Manufacturing	2,353	-16.3%	6.4%	5.5%
Wholesale Trade	953	-12.0%	2.6%	4.0%
Retail Trade	5,824	-1.6%	15.9%	10.5%
Transportation and Warehousing	1,479	-10.7%	4.0%	3.4%
Information	639	-1.4%	1.7%	3.3%
Finance and Insurance	719	-12.6%	2.0%	6.0%
Real Estate and Rental and Leasing	540	0.0%	1.5%	2.3%
Professional, Scientific, and Technical Services	868	11.0%	2.4%	6.9%
Management of Companies and Enterprises	282	15.1%	0.8%	1.6%
Administrative and Support and Waste Management and Remediation Services	1,111	-29.9%	3.0%	5.2%
Educational Services	4,637	5.9%	12.6%	10.8%
Health Care and Social Assistance	5,834	-0.1%	15.9%	17.0%
Arts, Entertainment, and Recreation	506	1.8%	1.4%	1.9%
Accommodation and Food Services	3,877	11.0%	10.6%	7.3%
Other Services (except Public Administration)	1,480	25.3%	4.0%	3.9%
Public Administration	3,179	-5.2%	8.7%	5.8%

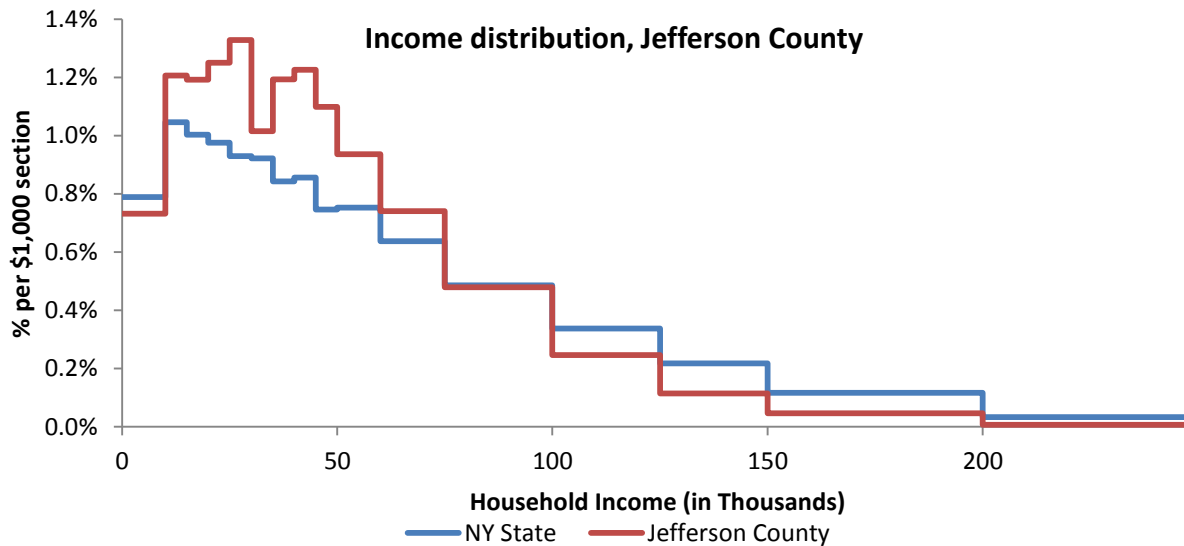
Source: U.S. Census Bureau - Public Use Quarterly Workforce Indicators (QWI) – annual averages

10 Household Income

10.1 Distribution

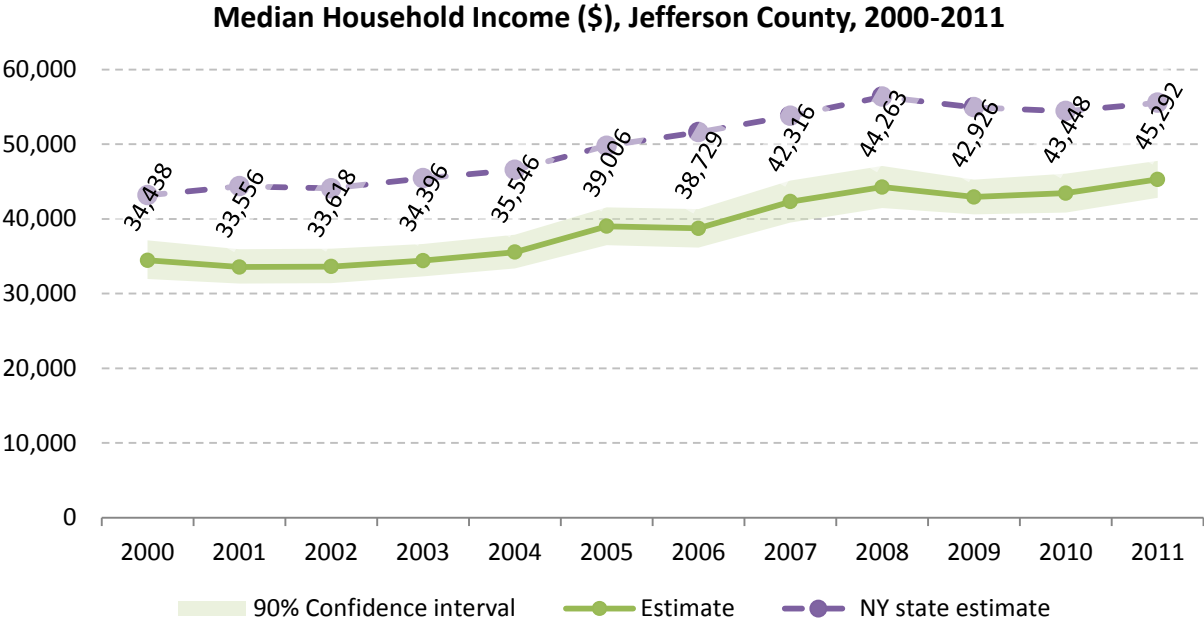
	Estimate	Margin of error	Interval width (in \$1,000)	Est. per \$1,000 section
Total:	44,722	± 655		
Less than \$10,000	3,273	± 350	10	327.3
\$10,000 to \$14,999	2,698	± 304	5	539.6
\$15,000 to \$19,999	2,665	± 359	5	533.0
\$20,000 to \$24,999	2,797	± 377	5	559.4
\$25,000 to \$29,999	2,970	± 365	5	594.0
\$30,000 to \$34,999	2,269	± 297	5	453.8
\$35,000 to \$39,999	2,668	± 369	5	533.6
\$40,000 to \$44,999	2,741	± 301	5	548.2
\$45,000 to \$49,999	2,458	± 350	5	491.6
\$50,000 to \$59,999	4,187	± 422	10	418.7
\$60,000 to \$74,999	4,971	± 447	15	331.4
\$75,000 to \$99,999	5,362	± 416	25	214.5
\$100,000 to \$124,999	2,753	± 304	25	110.1
\$125,000 to \$149,999	1,280	± 198	25	51.2
\$150,000 to \$199,999	1,033	± 168	50	20.7
\$200,000 or more	597	± 108	-	-

Source: 2007-2011 American Community Survey



Source: 2007-2011 American Community Survey

10.2 Median household income: Trends over time

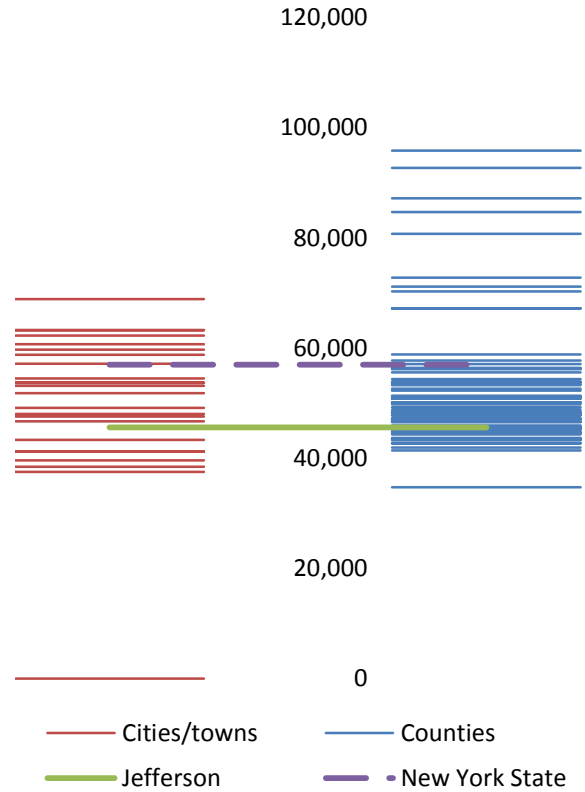


Source: Small Area Income and Poverty Estimates (SAIPE)

10.3 Median household income: Comparison between areas

	MEDIAN HOUSEHOLD INCOME (\$)	
	Estimate	Margin of error
New York State	56,951	± 190
Jefferson County	45,559	± 1,247
Cities		
Watertown	37,514	± 2,156
Towns		
Adams	53,681	± 6,473
Alexandria	41,163	± 6,056
Antwerp	54,500	± 7,000
Brownville	53,719	± 5,982
Cape Vincent	63,264	± 7,579
Champion	47,562	± 1,929
Clayton	49,118	± 8,268
Ellisburg	38,438	± 14,462
Henderson	58,750	± 14,056
Hounsfield	60,676	± 11,327
Le Ray	41,224	± 4,057
Lorraine	43,313	± 5,468
Lyme	51,813	± 8,998
Orleans	57,159	± 13,539
Pamelia	62,284	± 7,135
Philadelphia	48,056	± 8,251
Rodman	63,250	± 8,719
Rutland	53,167	± 11,412
Theresa	46,719	± 4,044
Wate	68,864	± 10,031
Wilna	39,599	± 4,617
Worth	59,688	± 19,113
Reservations		
	0	0.0

Median household income comparison within county (left) and between counties (right)



Source: 2007-2011 American Community Survey

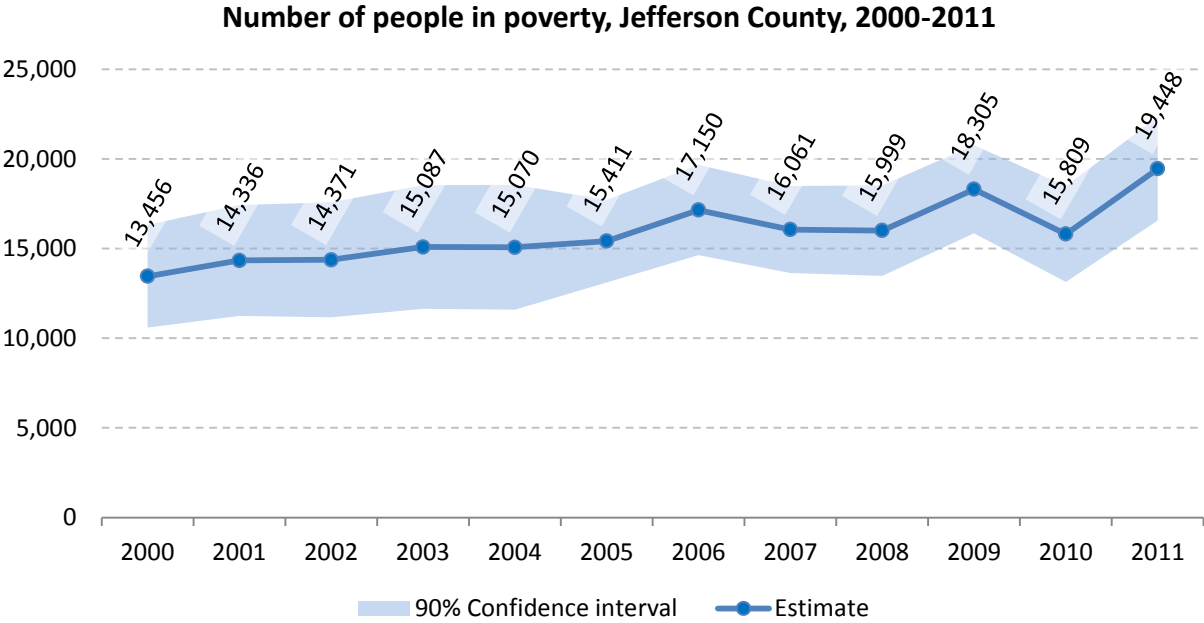
11 Poverty

11.1 Poverty characteristics

	TOTAL		BELOW POVERTY LEVEL		PERCENT BELOW POVERTY LEVEL	
	Estimate	Margin of error	Estimate	Margin of error	Estimate	Margin of error
Population for whom poverty status is determined	110,638	± 559	16,689	± 1,196	15.1%	± 1.1
AGE						
Under 18 years	28,571	± 215	6,322	± 711	22.1%	± 2.5
Related children under 18 years	28,451	± 224	6,207	± 707	21.8%	± 2.5
18 to 64 years	69,824	± 521	9,253	± 689	13.3%	± 1.0
65 years and over	12,243	± 237	1,114	± 182	9.1%	± 1.5
SEX						
Male	55,363	± 524	7,051	± 579	12.7%	± 1.1
Female	55,275	± 290	9,638	± 781	17.4%	± 1.4
RACE AND HISPANIC OR LATINO ORIGIN						
One race	106,937	± 801	15,763	± 1,193	14.7%	± 1.1
White	98,417	± 688	14,227	± 1,169	14.5%	± 1.2
Black or African American	4,204	± 431	813	± 271	19.3%	± 6.3
American Indian and Alaska Native	444	± 133	154	± 110	34.7%	± 22.0
Asian	1,628	± 131	222	± 148	13.6%	± 9.1
Hispanic or Latino origin (of any race)	5,514	± 183	1,008	± 305	18.3%	± 5.6
White alone, not Hispanic or Latino	96,202	± 482	13,886	± 1,139	14.4%	± 1.2
EDUCATIONAL ATTAINMENT						
Population 25 years and over	69,148	± 360	7,995	± 574	11.6%	± 0.8
Less than high school graduate	7,874	± 656	2,260	± 291	28.7%	± 2.9
High school graduate (includes equivalency)	24,583	± 927	3,204	± 440	13.0%	± 1.7
Some college, associate's degree	22,054	± 920	2,102	± 357	9.5%	± 1.5
Bachelor's degree or higher	14,637	± 691	429	± 136	2.9%	± 0.9
EMPLOYMENT STATUS						
Civilian labor force 16 years and over	49,963	± 1,036	4,715	± 568	9.4%	± 1.1
Employed	44,998	± 989	3,224	± 485	7.2%	± 1.0
Male	22,884	± 661	1,285	± 286	5.6%	± 1.2
Female	22,114	± 642	1,939	± 273	8.8%	± 1.2
Unemployed	4,965	± 478	1,491	± 279	30.0%	± 5.0
Male	2,782	± 414	826	± 186	29.7%	± 6.0
Female	2,183	± 263	665	± 192	30.5%	± 7.2
WORK EXPERIENCE IN THE PAST 12 MONTHS						
Population 16 years and over	84,996	± 554	10,881	± 740	12.8%	± 0.9
Worked full-time, year-round	36,097	± 832	952	± 184	2.6%	± 0.5
Worked part-time or part-year	23,431	± 844	3,894	± 469	16.6%	± 1.8
Did not work	25,468	± 734	6,035	± 505	23.7%	± 1.8

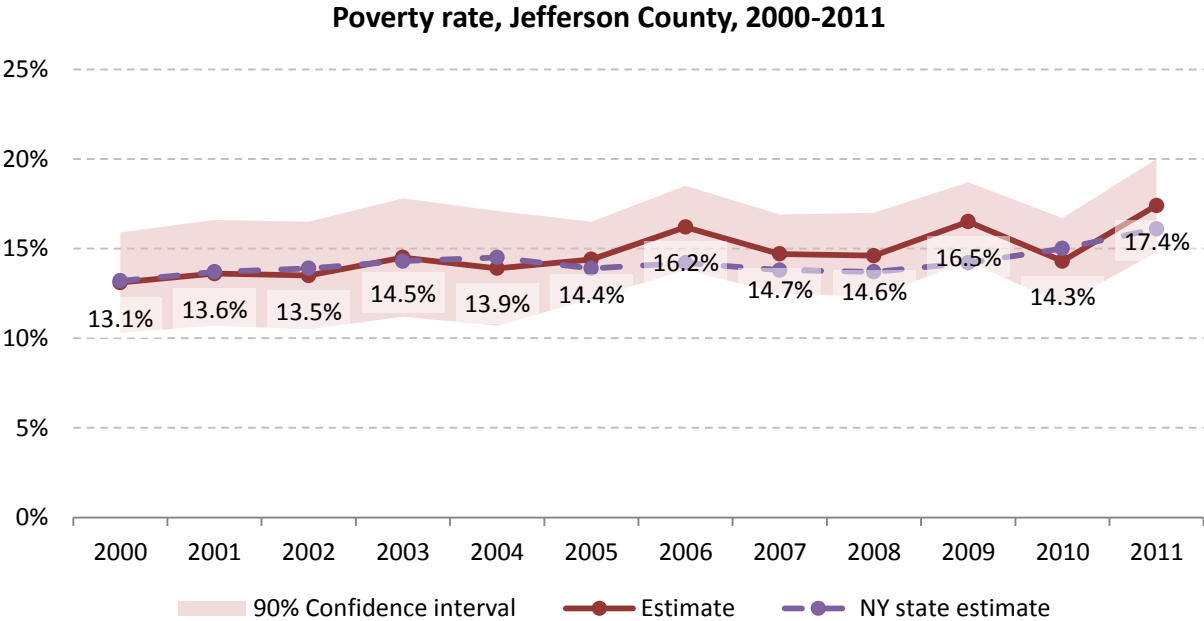
Source: 2007-2011 American Community Survey

11.2 Poverty: Trends over time: Count



Source: Small Area Income and Poverty Estimates (SAIPE)

11.3 Poverty: Trends over time: Rate

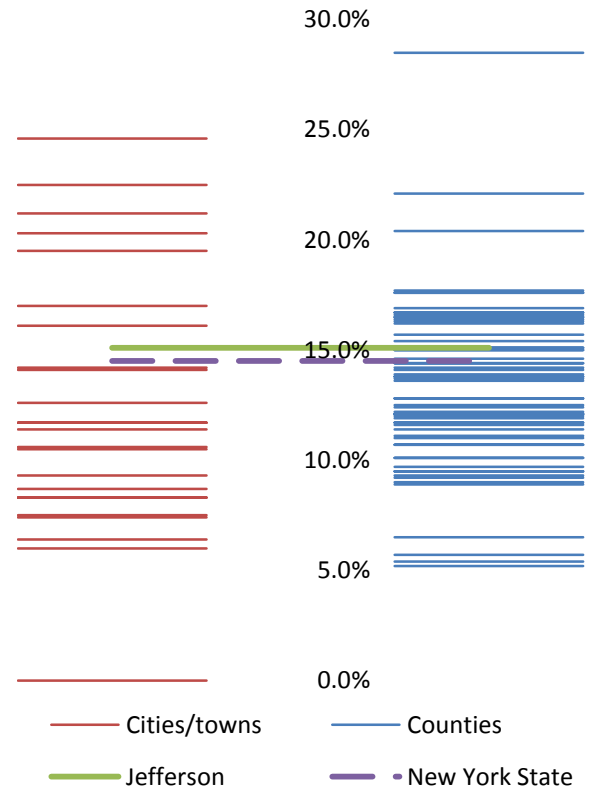


Source: Small Area Income and Poverty Estimates (SAIPE)

11.4 Poverty rate: comparison between areas

	Poverty Rate - All people	
	Estimate	Margin of error
New York State	14.5%	± 0.1
Jefferson County	15.1%	± 1.1
Cities		
Watertown	21.2%	± 2.6
Towns		
Adams	7.5%	± 2.9
Alexandria	17.0%	± 7.8
Antwerp	20.3%	± 6.9
Brownville	8.3%	± 3.1
Cape Vincent	10.6%	± 4.4
Champion	11.7%	± 4.2
Clayton	14.1%	± 4.4
Ellisburg	24.6%	± 10.0
Henderson	7.4%	± 2.8
Hounsfield	6.0%	± 3.4
Le Ray	16.1%	± 4.1
Lorraine	22.5%	± 10.2
Lyme	10.5%	± 7.2
Orleans	8.3%	± 5.8
Pamelia	6.4%	± 3.1
Philadelphia	11.7%	± 3.8
Rodman	12.6%	± 7.5
Rutland	8.7%	± 3.6
Theresa	14.2%	± 4.4
Wate	9.3%	± 4.5
Wilna	19.5%	± 7.4
Worth	11.4%	± 10.3
Reservations		
	0.0%	0.0

Poverty rate comparison within county (left) and between counties (right)

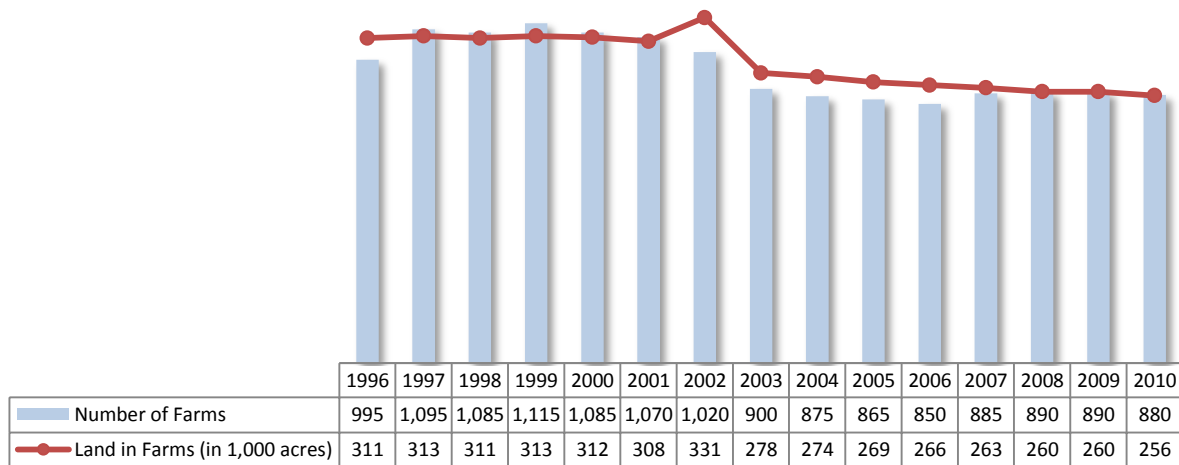


Source: 2007-2011 American Community Survey

12 Agriculture

12.1 Number of farms and land in farms

Jefferson County, 1996-2010



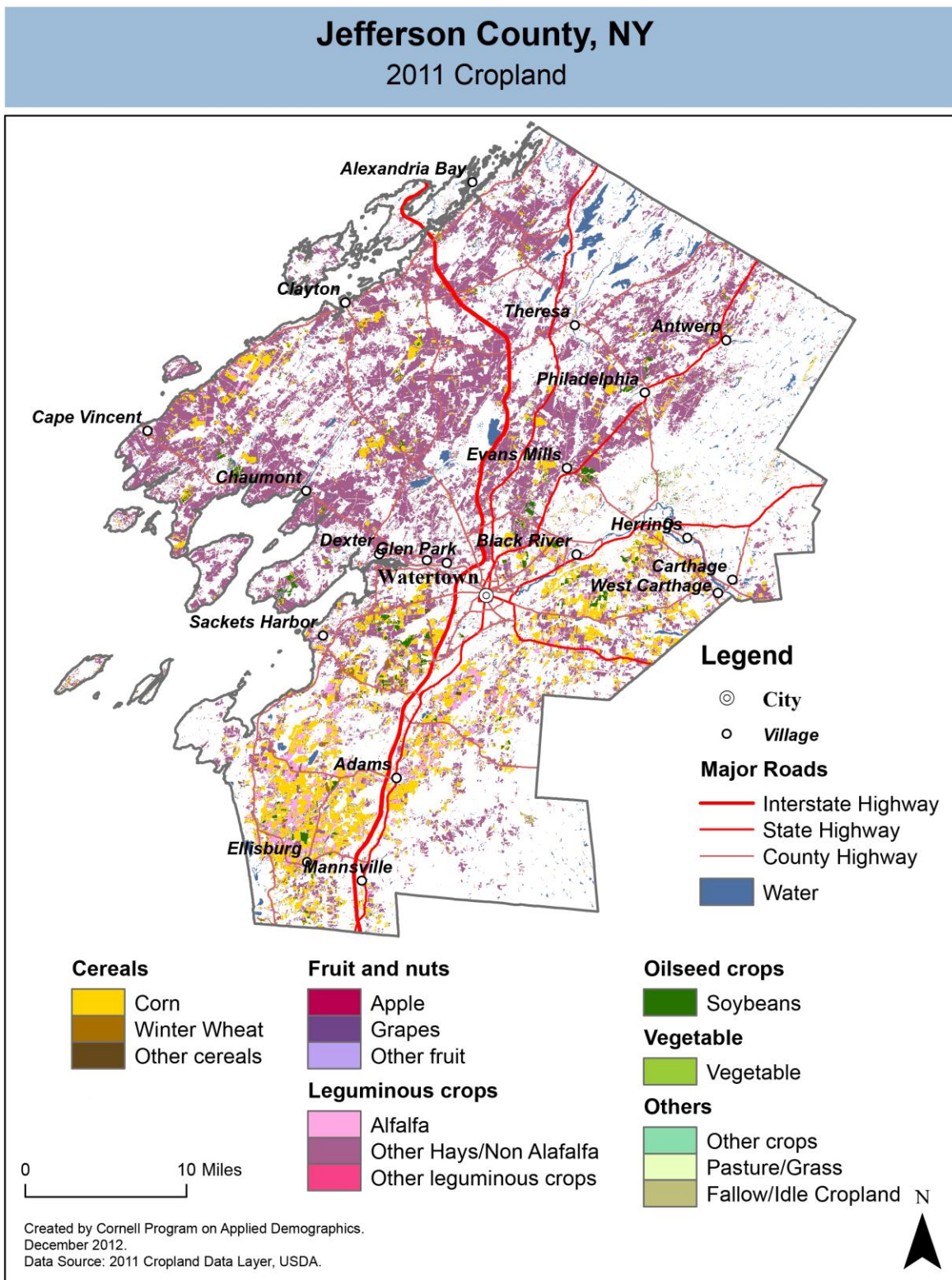
Source: National Agricultural Statistics Service – Annual Statistical bulletin

12.2 Farm Operator Characteristics

	Principal Operator		
	Total	Male	Female
Number of farms	885	753	132
Average size of farm (acres)	296	322	152
PRIMARY OCCUPATION			
Farming	482	414	68
Other	403	339	64
AGE			
Under 45	173	129	44
45 to 64 years	507	431	76
65 years and over	205	193	12
Average age (years)	55.3	56.4	49
YEARS ON PRESENT FARM			
Less than 3 years	32	21	11
3 to 4 years	46	39	7
5 to 9 years	103	87	16
10 years or more	704	606	98

Source: 2007 Agricultural Census

12.3 Map of type of crop

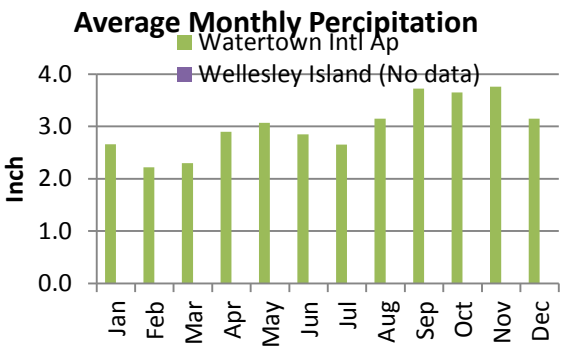
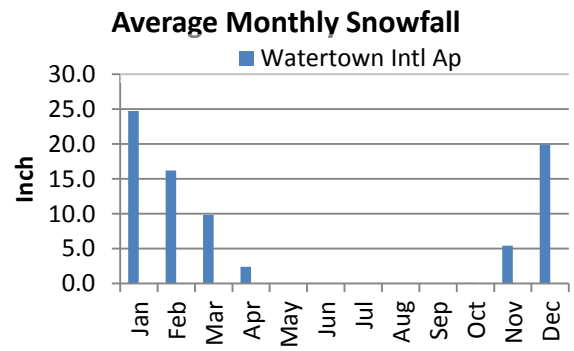
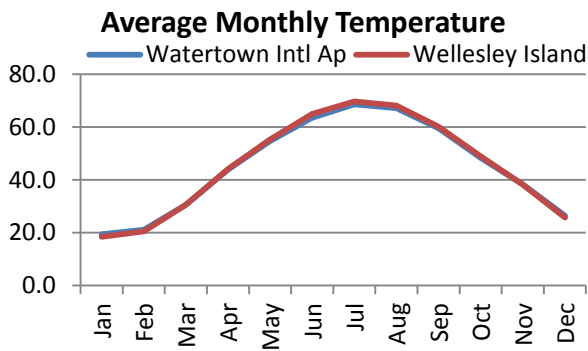
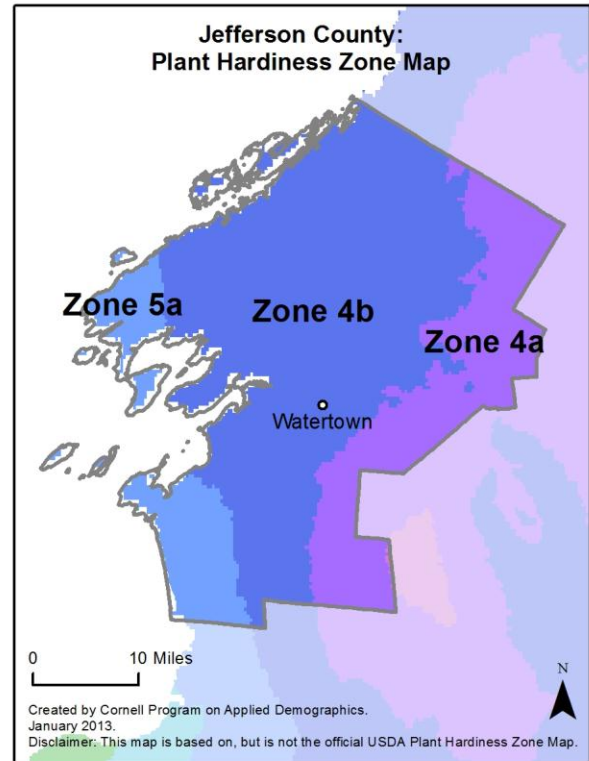
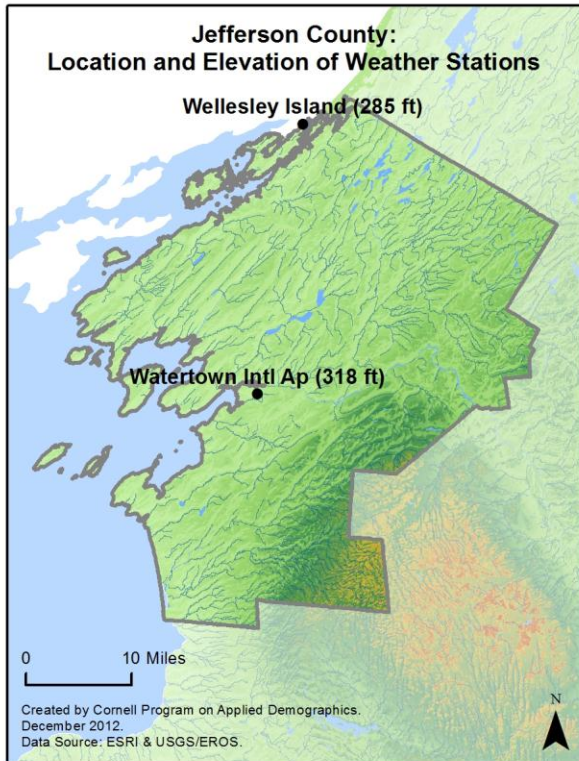


12.4 Estimated acreage by crop

	Acreage	%		Acreage	%
Cereals			Fruit and nuts		
Barley	76	0.0%	Apples	16	0.0%
Corn	48,868	17.7%	Apricots	-	
Millet	-		Blueberries	-	
Oats	191	0.1%	Cherries	4.7	0.0%
Rye	201	0.1%	Cranberries	-	
Sorghum	16	0.0%	Grapes	0.2	0.0%
Speltz	-		Nectarines	-	
Spring Wheat	59	0.0%	Peaches	-	
Sweet Corn	20	0.0%	Plums	-	
Triticale	6	0.0%	Prunes	-	
Winter Wheat	1,471	0.5%	Strawberries	-	
Dbl Crop WinWht/Corn	-		Walnuts	-	
Leguminous crops			Beverage and spice crops		
Alfalfa	13,267	4.8%	Herbs	-	
Other Hay/Non Alfalfa	194,802	70.4%	Peppers	-	
Dry Beans	69	0.0%	Trees		
Peas	-		Christmas Trees	0.9	0.0%
Vetch	-		Other Tree Crops	-	
Oilseed crops			Other crops		
Soybeans	7,005	2.5%	Tobacco	-	
Sunflower	1.1	0.0%	Misc Veggies & Fruits	-	
Sugar crops			Clover/Wildflowers	4.4	0.0%
Sugarbeets	-		Sod/Grass Seed	-	
Root/tuber crops with high starch or inulin content			Switchgrass	-	
Potatoes	56	0.0%	Dbl Crop Soybeans/Oats	-	
Vegetables and melons			Dbl Crop WinWht/Soybeans	-	
Asparagus	-		Other Crops	5	0.0%
Broccoli	-		Pasture/Grass		
Cabbage	0.4	0.0%	Fallow/Idle Cropland		
Carrots	4.2	0.0%		6,371	2.3%
Eggplants	0.2	0.0%		4,053	1.5%
Onions	48	0.0%			
Pumpkins	-				
Squash	-				
Tomatoes	-				
Turnips	-				

Source: National Agricultural Statistics Service - Cropland Data Layer 2011

13 Climate



Average length of freeze-free season

	Last day of frost	First day of frost	Season length
Watertown Intl Ap	May 16	September 27	133
Wellesley Island	Not available		

Source: NOAA, Northeast Regional Climate Center at Cornell University. Averages 1981-2010

14 Glossary

American Community Survey (ACS) - The American Community Survey is an ongoing survey of the population that provides data every year on a variety of social and economic characteristics—age, sex, race, family and relationships, income and benefits, health insurance, education, veteran status, disabilities, where you work and how you get there, where you live and how much you pay for some essentials. The ACS replaced the information previously gathered by what was known as the “long form” of the decennial censuses. The ACS provides communities, companies and other institutions with current information they need to plan investments and services. Information from the survey generates data that help determine how more than \$400 billion in federal and state funds are distributed each year. Every estimate presented in the American Community Survey, as in other surveys, has an uncertainty associated with it. Often the magnitude of that uncertainty is expressed as the Margin of Error.

Confidence Interval (CI) - indication of the degree of uncertainty about a sample estimates. Confidence intervals have been traditionally reported at the 90, 95 and 99 percent levels. A 90 percent confidence interval can be interpreted, for example, roughly as providing 90 percent certainty that the interval defined by the upper and lower bounds contain the true value of the characteristic. If a Margin of Error is given, the lower bound of the confidence interval is equal to the estimate minus the Margin of Error and the upper bound is equal to the estimate plus the Margin of Error. (See further, Margin of Error definition below.)

County subdivision or Minor Civil Division (MCD) - The Census Bureau geography for primary administrative units below the county level in New York is collectively referred to as county subdivisions or minor civil divisions. These include towns, cities and Indian Reservations.

Decennial Census - the Census of the population and housing taken every 10 years in the United States, at the start of each decade, since 1790.

Employed – either “at work” or “with a job, but not at work”.

Group Quarters Population - all U.S. residents who live in group living facilities including correctional institutions, juvenile facilities, skilled nursing facilities, college residence halls, military barracks, group homes, and workers' dormitories.

Household Population - all U.S. residents who live in housing units such as single family homes, townhouses, apartments, and mobile homes.

Intercensal Population Estimates - estimates produced for the years between two decennial censuses when both the beginning and ending populations are known. They are produced once a decade by adjusting the existing time series of postcensal estimates for the entire decade to smooth the transition from one decennial census count to the next. They differ from the postcensal estimates that are released annually because the difference between the April 1 postcensal estimate and April 1 census count for the end of the decade is redistributed across the estimates for that decade. For dates when both postcensal and intercensal estimates are available, intercensal estimates are preferred.

Labor Force - consists of people classified as employed or unemployed.

Margin of Error (MOE) - a measure of the precision of an estimate at a given level of confidence. The confidence level of a margin of error indicates the likelihood that the difference between the population value (which you

would get if you could measure the whole population instead of a sample) and the estimate is less than or equal to the margin of error. The range from the estimate minus the margin of error to the estimate plus the margin of error is called the confidence interval. All ACS estimates are published with their margins of error at the 90 percent confidence level. Margins of error are useful in assessing the reliability of estimates and whether differences between estimates are significant.

NAICS - The North American Industry Classification System or NAICS is used by business and government to classify business establishments according to type of economic activity (process of production).

Numeric Population Change - difference between the population of an area at the beginning and end of a time period. It is computed by taking the difference between the population at one point in time (t_1) and some future time (t_2).

Percent Population Change - difference between the population of an area at the beginning and end of a time period, expressed as a percentage of the beginning population. It is computed by dividing the population change ($t_2 - t_1$) by t_1 and multiplying the result by 100.

Population Estimates - The calculated number of people living in an area as of a specified point in time, usually July 1st. The estimated population is calculated using a component of change model that incorporates information on natural increase (births, deaths) and net migration (net domestic migration, net international migration) that has occurred in an area since the latest decennial census. A procedure for estimating the current population using a procedure involving a "base population" value at time $t - 1$, adding to that the births during the interval $t - 1$ to t , subtracting the deaths during that interval $t - 1$ to t , and then adding the net domestic and net international migration that occurred during that interval.

Population Density - Total number of people per areal unit like a square mile or square kilometer.

Population Pyramids - A graphical way of portraying a population's age and sex composition at a given slice in time. The first horizontal bar, constituting the base of the graph, is the youngest age group (typically 0-4) with the number of males in that age group on the left and the number of females in that age group on the right. On top of that age group is another horizontal bar for the next age group (e.g. 5-9) and so forth with the top bar typically for those aged 75 and over. In a population with lots of births and deaths, the shape typically forms a pyramid with a broad base and a narrow top. It is one of the most basic ways to understand population change over time as well as between different geographic units of a similar status (e.g. counties).

Postcensal Estimates - estimates produced for the years after a decennial census when only the beginning population is known. They are produced and revised each year, targeted to July 1 of that year.

Projection - estimated population at some future time based on assumptions about births, deaths, migration, and ages.

Race/Ethnicity - the Census Bureau collects racial data in accordance with guidelines provided by the U.S. Office of Management and Budget (OMB), and these data are based on self-identification. The racial categories included in the census questionnaire generally reflect a social definition of race recognized in this country and not an attempt to define race biologically, anthropologically, or genetically. In addition, it is recognized that the categories of the race item include racial and national origin or sociocultural groups. People may choose to report more than one race to indicate their racial mixture, such as "American Indian" and "White." People who identify their origin as Hispanic, Latino, or Spanish may be of any race. OMB requires five minimum categories: White, Black or African American, American Indian or Alaska Native, Asian, and Native Hawaiian or Other Pacific

Islander. Hispanics may be classified as white or black. So we generally separate them out as an ethnic group first.

Unemployed – Not employed, but actively looking for work and available to accept a job.

Unemployment rate – Fraction of the Labor Force that is unemployed.

Urban Area – A densely settled area with at least 2,500 people. If the total number of people is less than 50,000 the Census Bureau calls it an Urban Cluster, otherwise an Urbanized Area.

Vintage - each year, the U.S. Census Bureau produces and publishes estimates of the population for each state and county, as well as the nation as a whole. These are called “vintages.” In producing these vintages, the Bureau utilizes administrative data from a number of sources to estimate 1) the change in population since the most recent decennial census, and 2) the population for each year since the most recent decennial census. With each annual release of population estimates (vintage), the entire time series of estimates beginning on April 1, 2010 is revised and updated.

15 References

Jefferson County homepage: <http://www.co.jefferson.ny.us/>

At Cornell:

- Cornell Cooperative Extensions (CCE)
Home page: <http://www.cce.cornell.edu>
 - Jefferson local office: <http://www.ccejefferson.org/>
- Program on Applied Demographics (PAD)
URL: <http://pad.human.cornell.edu/>
- Community and Regional Development Institute (CaRDI)
URL: <http://devsoc.cals.cornell.edu/cals/devsoc/outreach/cardi/index.cfm>

Data sources and background information:

- U.S. Census Bureau - general
 - QuickFacts: <http://quickfacts.census.gov/qfd/states/36/36045.html>
 - QuickLinks: <http://quickfacts.census.gov/qfd/states/36/36045lk.html>
 - American FactFinder: <http://factfinder2.census.gov>
- U.S. Census Bureau - population
 - Decennial Census
 - Background: <http://2010.census.gov/2010census/>
 - Demographic Profile: http://factfinder2.census.gov/bkmk/table/1.0/en/DEC/10_SF1/SF1DP1/0500000US36045
 - American Community Survey (ACS)
 - Background: <http://www.census.gov/acs/www/>
 - Social Data Profile: http://factfinder2.census.gov/bkmk/table/1.0/en/ACS/10_5YR/DP02/0500000US36045
 - Economic Data Profile: http://factfinder2.census.gov/bkmk/table/1.0/en/ACS/10_5YR/DP03/0500000US36045
 - Housing Data Profile: http://factfinder2.census.gov/bkmk/table/1.0/en/ACS/10_5YR/DP04/0500000US36045
 - Demographics Data Profile: http://factfinder2.census.gov/bkmk/table/1.0/en/ACS/10_5YR/DP05/0500000US36045
 - Population estimates: <http://www.census.gov/popest/estimates.html>
- U.S. Census Bureau – Small Area Income & Poverty Estimates (SAIPE)
 - <http://www.census.gov/did/www/saipe/>
- U.S. Census Bureau - Public Use Quarterly Workforce Indicators (QWI) – annual averages
 - <http://www2.vrdc.cornell.edu/news/data/qwi-public-use-data/>
- Bureau Labor Statistics (BLS) – Local Area Unemployment Statistics: <http://www.bls.gov/lau/>
- NY Department of Labor -
 - Labor statistics: <http://www.labor.ny.gov/stats/>
 - Quarterly Census of Employment and Wages (QCEW): <http://www.labor.ny.gov/stats/lsqcew.shtm>
- Bureau of Economic Analysis (BEA) – Local Area Personal Income and Employment: <http://bea.gov/iTable/iTable.cfm?ReqID=70&step=1>

- USDA Census of Agriculture
 - 2007
 - Home page: <http://www.agcensus.usda.gov/Publications/2007/index.php>
 - County profile: http://www.agcensus.usda.gov/Publications/2007/Online_Highlights/County_Profiles/New_York/cp36045.pdf
 - Race, Ethnicity and Gender Profiles: http://www.agcensus.usda.gov/Publications/2007/Online_Highlights/Race_Ethnicity_and_Gender_Profiles/New_York/cpd36045.pdf
- USDA National Agricultural Statistics Service (NASS)
 - Home page: <http://www.nass.usda.gov/index.asp>
 - New York Statistical Bulletins: http://www.nass.usda.gov/Statistics_by_State/New_York/Publications/Annual_Statistical_Bulletin/
 - Cropland Data Layer – CropScape: <http://nassgeodata.gmu.edu/CropScape/>
- USDA Agricultural Research Service – Plant Hardness Zone Map: <http://planthardiness.ars.usda.gov/PHZMWeb/>
- NOAA, Northeast Regional Climate Center at Cornell University
 - Home page: <http://www.nrcc.cornell.edu/index.html>

Alternative sites for data retrieval:

- The Nelson A. Rockefeller Institute of Government – New York State Statistical Yearbooks http://www.rockinst.org/nys_statistics/
- Headwaters Economics: Economic Profile System – Human Dimensions Toolkit <http://headwaterseconomics.org/tools/eps-hdt>
- National Historical Geographic Information System (NHGIS) <https://www.nhgis.org/>
- Social Explorer <http://www.socialexplorer.com/pub/home/home.aspx>
- Missouri Census Data Center <http://mcdc.missouri.edu/>
- DataFerret <http://dataferrett.census.gov/>
- Investigative Reporters and Editors (IRE) Census project <http://census.ire.org/>